

**SPECIAL CONGREGATIONAL MEETING OF IMMANUEL LUTHERAN CHURCH
REJUVENATION COMMITTEE REPORT AND PROPOSALS
SUNDAY OCTOBER 23, 2011, 9:30 AM**

Dear Congregation,

The Church Council approved the scheduling of a Special Congregational Meeting to occur on October 23rd at 9:30 AM (between services) for the purpose of having the Rejuvenation Committee:

1. Review/discuss the information shared by Cindy Evans Voorhees, Voorhees Design.
2. Review/discuss the results of the church survey on the basic floor design and illustrate the design.
3. Obtain/not obtain approval to further develop more detailed plans for a basic floor design for later presentation to the Congregation.
4. Discuss and obtain/not obtain approval for the interim removal and movement of a portion of the pews in Immanuel Lutheran's Main Sanctuary during Advent to create a different atmosphere in the physical space during the season. The precise degree of removal/movement would be coordinated with the theme for Advent and also with the Property Committee. A suggestion will be proffered at the Special Meeting.

To prepare you for this Special Meeting, we have attached to this Report, four sub-reports/illustrations to support each of the four items noted above.

#1 -- SUB-REPORT TO CONGREGATION ON THE AUGUST 22ND VISIT FROM CINDY VOORHEES

#2 -- SUB-REPORT TO CONGREGATION ON THE CHURCH SURVEY

#3 -- SUB-REPORT/ILLUSTRATIONS TO CONGREGATION ON THE BASIC FLOOR DESIGN

#4 -- SUB-REPORT/ILLUSTRATION TO CONGREGATION ON A TEMPORARY MOVEMENT OF PEWS

We thank you in advance for reviewing this report before the Special Meeting. Thank you for your continued prayers, support and assistance in planning for tomorrow.

Alan Schroeder, Council Member and Chair of the *Rejuvenation Committee*

alan@schroederlezamiz.com

#1 -- SUB-REPORT TO CONGREGATION ON THE AUGUST 22ND VISIT FROM CINDY VOORHEES

Cindy Voorhees credential, background and experience are generally stated at her website. <http://www.voorheesdesign.com>. She has assisted various Christian congregations, as well as other religious beliefs, in educating them about their particular religious space, and in helping to design modifications to such space to achieve a defined mission, like the physical mission statement of the Rejuvenation Committee.

On August 22nd, Ms Voorhees toured the facilities of Immanuel Lutheran, spoke with Rejuvenation Committee members: Pastor Collins, Lynnette Chandler, Amy Dockter, Kirk Higginson, Alan Schroeder, and Ken Wiley. Ms. Voorhees then presided over an open meeting at 6:30 pm which was attended by the Committee, some members of the Church Council, and some Congregational members. Her presentation addressed the role of the church in the community: What is the vision and mission into the future for Immanuel? How to look at a church? What does Immanuel's architecture say about who you are? What is sacred at Immanuel and why? She also showed a video of St. Paul's of New York and a PowerPoint presentation of various floor plans.

This time with Ms. Voorhees was a wonderful opportunity to learn about the religious-physical space trends across the United States. Believe it or not the trend is not "modern" per se; the young and old apparently still like the tradition and liturgical service that the likes of Immanuel Lutheran provides. However, the key is the presentation of the physical space to achieve an objective, such as Rejuvenation Committee's physical mission statement, which is to *create an atmosphere that accentuates the spirit of wholeness, unity, and intimacy through space, sight, and sound at Immanuel Lutheran Church.*

During her visit, Ms. Voorhees made observations regarding Immanuel Lutheran's physical space. Some of the most notable follow:

- Immanuel has worked successfully the past 1.5 years to develop a physical mission statement: *"To create an atmosphere that accentuates the spirit of wholeness, unity and intimacy through space, sight, and sound at Immanuel Lutheran Church"*
- A basic conceptual floor design has been favorably reviewed by the congregation.
- Consider the Christian tradition now is circling back to our roots, worshiping God around a table with chairs as in the case of the Lord's Supper. Pews were designed to hold large numbers of people while chairs are designed to allow flexibility: (1) throughout the church calendar year so to create different settings based upon season/themes; and (2) for other civic/community use of the space, rhetorically noting "what organization uses its building only one day a week?"
- Consider improving the lighting and interior color of the sanctuary to accentuate openness and "light".
- Consider moving the organ as our ears are designed to have sound projected at them as opposed from behind.

Other related and not so related physical space items also were noted:

- Exterior landscaping needs color (flowers) and trimming. The bushes in the planter are hiding a portion of our sign thus giving a sense of Immanuel hiding from the Community. We need a sense of openness to the Community in our landscaping.
- The website is in need of pictures of people-children-worship.
- Sunday night services: The younger generation have jobs, activities, and academic responsibilities throughout the weekend, but want (and need) a sense of tradition and liturgy on Sunday evening to focus or refocus for the coming week.

#2 -- SUB-REPORT TO CONGREGATION ON THE CHURCH SURVEY

The results of the Rejuvenation Committee survey were tabulated. They indicate a desire by the Congregation to have the following basic floor design:

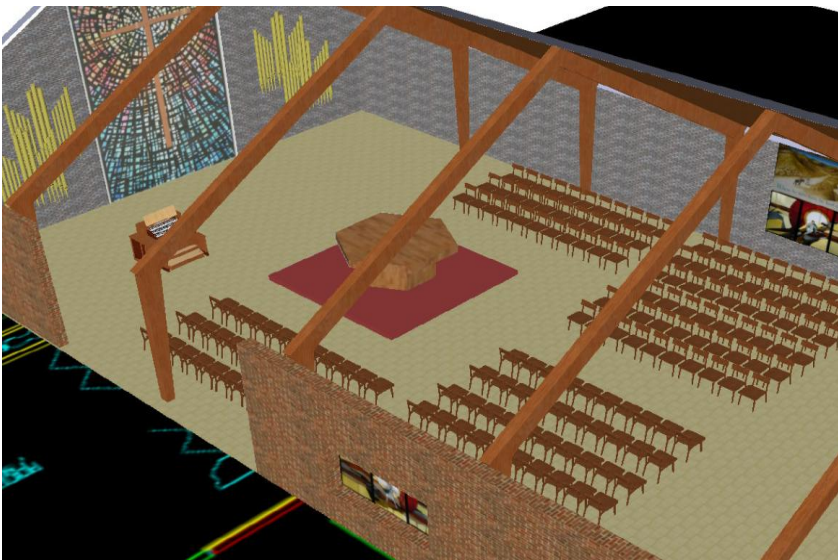
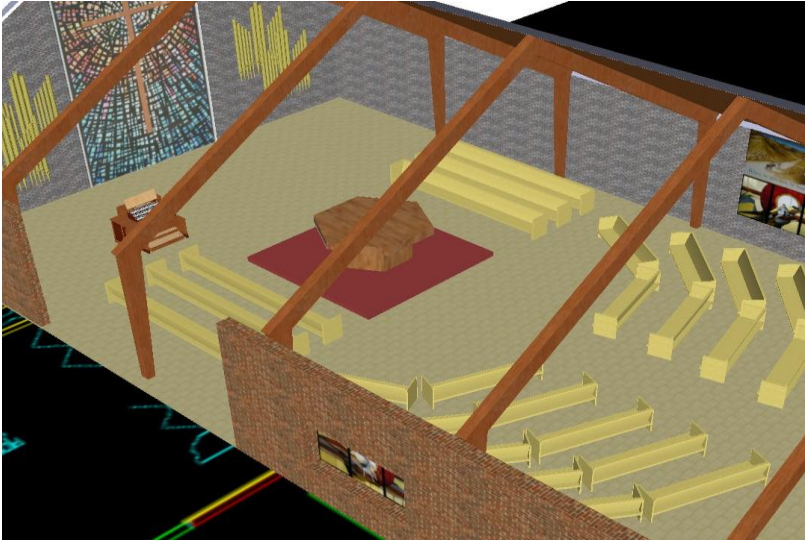
- Move the Altar North
- Move the organ and choir to the south side of the main floor
- Have seating wrap around the altar 3/4 of the way
- Locate a cry room in the loft or north side of the main floor

Below is a numerical summary for your review:

Immanuel Sanctuary Floor Design Priorities					Count				
	Total Points	Average	Median	St.Dev	1	2	3	4	5
Location of the Alter									
Middle	85	2.58	2.00	1.46	8	9	6	4	5
SW/SE Corner	74	2.47	3.00	1.28	10	4	10	4	2
West/East Middle	152	3.90	4.00	1.41	5	3	1	12	18
Move North, Room South	74	2.47	2.00	1.11	7	9	7	7	-
Move North, Organ South	199	4.15	5.00	1.37	5	2	5	5	31
Location of PEWS									
As-Is	133	3.69	4.00	1.37	3	5	7	6	15
Surround Alter	75	2.59	2.00	1.21	3	11	9	2	3
Three-Quarter Circle Alter	160	3.90	4.00	1.34	3	5	5	8	20
Half Circle Alter	108	3.48	4.00	1.31	4	3	5	12	7
Location of the Organ									
As-Is	168	3.82	4.00	1.26	3	3	12	7	19
Front of Church	187	4.07	5.00	1.32	4	2	8	5	27
Back of Church, main floor	110	3.14	3.00	1.19	4	6	10	11	4
Location of Quiet Room - Cry Room									
As-Is	150	3.75	4.00	1.32	2	7	7	7	17
Choir Loft	145	3.72	4.00	1.21	3	1	14	7	14
Back of Church	154	4.05	4.00	1.01	1	3	3	17	14
Front of Church	58	2.00	2.00	0.96	5	15	5	2	-
Location of Choir									
As-Is	151	3.68	4.00	1.23	1	8	9	8	15
Front & Side, main floor	205	4.18	5.00	1.20	3	1	10	5	30
Back of Church, main floor	102	3.00	3.00	1.35	8	2	10	10	4
Immanuel Sanctuary Conceptual Drawings					Count				
	Total Points	Average	Median	St.Dev	1	2	3	4	5
Alter in middle	44	2.20	2.00	1.06	6	7	4	3	-
Alter South West	55	2.75	3.00	1.41	6	2	5	5	2
Alter Middle West	84	3.65	4.00	1.40	2	4	3	5	9
Alter North, Cry South	56	2.80	3.00	1.36	4	5	5	3	3
Alter North, Organ South	106	3.79	5.00	1.66	6	1	2	3	16

#3 -- SUB-REPORT/ILLUSTRATIONS TO CONGREGATION ON THE BASIC FLOOR DESIGN

Based upon the information the Rejuvenation Committee has collected over the last 18-months, as well as input from the Congregation, the Committee would like the approval of the Congregation to develop more detailed plans on the following basic floor design:



**#4 -- SUB-REPORT/ILLUSTRATION TO CONGREGATION ON A TEMPORARY
MOVEMENT OF PEWS**

The Committee would like the approval of the Congregation to move some of the pews in Immanuel Lutheran's Main Sanctuary during Advent to create a different physical space atmosphere during Advent. The precise degree of removal/movement would be coordinated with Pastor's theme for Advent and with the Property Committee, though the illustration below is suggested:

As the plan is available, it will be distributed.